



**Bobcat**<sup>®</sup>

**M2-Series  
Compact Loaders**  
700 & 800 Platforms



***One Tough  
Animal***<sup>®</sup>





# WHY **BOBCAT**?

**When you need to lift high and heavy. When you're running the most demanding hydraulic attachments. When you need to attack your toughest jobs with pure Bobcat performance, the M2-Series 700 and 800 platform loaders deliver. This rugged lineup delivers the size, machine weight, lift capacities and horsepower to do more, while maintaining the flexibility and versatility of a compact machine.**







The skid-steer loader can pivot 360 degrees, which makes it one of the most maneuverable pieces of equipment available.



### **Maintenance-Free Chaincase**

The rugged Bobcat® chaincase is the only maintenance-free chaincase in the industry with exclusive fixed-axle tubes, stronger axles and fully sealed bearings.

### **No Adjustments**

The Bobcat chaincase requires no adjustments – ever. Strong chains. Tight manufacturing tolerances. Endless roller, high-strength oval chains (HSOC). Thick side-link plates and hardened pins. The chains are 38% stronger than the competition.





# SKID-STEER LOADERS

Since inventing the world's first true compact loader in 1958, Bobcat has constantly improved on its original concept: a tough, agile and versatile compact machine that can tackle an incredible number of jobs. | Today, the innovation continues. The Bobcat compact track loader features a superior design that outperforms other brands while maximizing your uptime and delivering unmatched comfort.

## Tire Options

Bobcat has an extensive offering of pneumatic and solid loader tires. Choosing the best tire is important for machine traction, flotation, wear and overall performance.





# COMPACT TRACK LOADERS



## DESIGNED FOR DURABILITY

Heavy-duty construction, component protection and superior design with minimal moving parts increase the service life of your track loader – no matter which undercarriage you choose.



By design, compact track loaders weigh more than skid-steer loaders of the same size. Thanks to tracks, that weight is spread out over a wider area for increased flotation, minimal ground disturbance, higher pushing force and better lifting of larger loads.

### **Feel more control in your hands.**

With Bobcat compact track loaders, you can feel and control the loader's drive, engine torque and tractive effort – so you can push your machine to the limit without an engine anti-stall system robbing you of power when you need it the most.

### **Protected Hoses**

Hydraulic hoses within the compact track loader's undercarriage are carefully routed and protected to reduce snags and impacts that cause downtime.

### **Heat-Treated Inner Bars**

The self-contained axle system contains an inner bar surrounded by four rubber cords. The inner bar is heat-treated for maximum strength, increased longevity and more uptime.

### **Hydraulic Track Tensioning**

The hydraulic track tensioning system minimizes the chance of loosening and detracking in tough working conditions. Available on the T870.

### **Exclusive Bobcat Tracks**

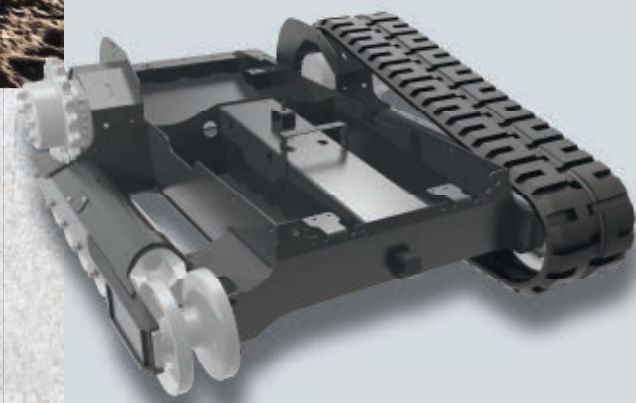
Bobcat offers seven different tread patterns to accommodate various applications and optimize your compact track loader's performance for the jobs you do.

### **Superior Pushing Force**

With more surface area in contact with the ground, direct-drive motors, and a perfect balance between machine weight and horsepower, the pushing force of Bobcat compact track loaders is second to none.

### **Low Impact**

High-flotation Bobcat compact track loaders minimize damage to lawns, natural terrain and other established surfaces for fewer profit-eating surface repairs.





THE BOBCAT

# TRACK ADVANTAGE

Bobcat compact track loaders give you advanced designs that are engineered for severe working conditions and optimized for the ultimate operator experience.



## Solid-Mounted Strength

Our solid-mounted track options feature a fully enclosed design that protects components such as hoses and drive motors. Solid-mounted undercarriages have fewer moving parts, which reduces maintenance in addition to stabilizing the loader and work group.



### **5-Link Torsion Suspension Undercarriage**

Included as a standard feature on the T870, the 5-Link torsion suspension system dampens vibration to provide a smoother ride that you can feel throughout the cab. It also absorbs stress and vibrations to improve the life of machine components. An extra link on the rear axle provides additional stability when lifting a load high or when performing grading tasks, providing the ultimate combination of operator comfort and work performance.

### **Elevated Sprocket Design**

Elevated sprockets shed mud and debris as you work, reducing wear.

### **Standard Track Undercarriage**

This simple, strong undercarriage design offers consistent grading performance and lasts longer than other track systems.

### **Better Ride Quality**

A dual-flange front idler rides on rubber to dampen vibration from the ground. Wider rollers further reduce vibration and cause less wear on the track.

### **Embedded Steel**

Tough steel braces support and guide the track. Steel reinforcements inside the track provide additional strength.

### **Forged-Steel Rollers and Idlers**

Idlers and rollers are steel, not rubber. Dual-flange front idlers are wider, providing more contact with the tracks and improving ride quality.

### **Simple Maintenance**

When it's time to adjust track tension, all it takes is a common grease gun. Idlers and rollers are permanently sealed and lubricated.

### **Ground Clearance**

Ground clearance is as high as 9.4 inches. Curb clearance is as high as 10.8 inches on select models.

### **Improved Track Carriage Cleanout**

The track tensioning system housing features a beveled frame to shed material buildup during operation.



## **THE BOBCAT ROLLER SUSPENSION™ SYSTEM**

This undercarriage design suspends rollers by utilizing high-strength steel leaf springs, reducing vibration and improving operator comfort without sacrificing durability.





# MOVE FASTER. FINISH SOONER.

## Faster Cycle Times

Hydraulic pumps in Bobcat loaders are matched to cylinder size and loader lift capacity to provide fast cycle times that help you get the job done faster.

## 2-Speed Travel

Spend less time traveling across a jobsite or between jobs. Move faster – and get the job done sooner – with 2-Speed travel for Bobcat compact track loaders. This time-saving feature boosts your top travel speed as high as 12 mph.\*

\*Depending on model.





Great performance doesn't only come from a high-horsepower engine. Bobcat loaders use the machine's overall design to deliver more usable horsepower. We build machines with the right balance between engine and pump, plus a weight distribution that delivers powerful breakout forces and faster cycle times. If you need to work quicker, lift more and outperform the competition, Bobcat compact loaders are the only choice.

### **Automatic Ride Control**

Automatic ride control detects when you're carrying material and cushions the load to reduce spillage and increase operator comfort. The system works at any speed. Operators can flip a switch to turn it off for backdragging or other tasks.

### **Powerful Hydraulics**

The Bobcat engine, pump, horsepower and cubic-inch displacement are configured precisely for each model's specific operating capacity. Engine horsepower and hydraulic system performance are finely tuned to run circles around other machines.

### **Hydraulic Bucket Positioning**

Optional hydraulic bucket positioning keeps your bucket level when raising lift arms to reduce spillage and allow you to work more efficiently.

### **Powerful Breakout Forces**

High-efficiency hydraulic pumps deliver more power matched to demand and provide better breakout forces.

### **More Torque**

Bobcat engines have a robust combustion chamber that handles more pressure and produces more torque than ever before – especially at low rpm operation. This means better performance for pushing, digging, lifting and operating attachments with less chance of stalling.





Go to [Bobcat.com/Tier4Engine](https://www.bobcat.com/Tier4Engine) to learn more about the Bobcat engine features and performance improvements.

## TIER 4 SOLUTIONS

When Tier 4 emissions standards required every equipment manufacturer to make equipment changes, Bobcat designed a non-DPF Tier 4 solution that also delivers new features and provides more performance to customers.

### **Simple, State of the Art and Non-DPF**

The biggest advantage of our Tier 4 solution is simplicity. Bobcat engines meet Tier 4 regulations without a diesel particulate filter (DPF). This reduces downtime that occurs with DPF regeneration and long-term DPF maintenance costs. That allows operators to focus on working.

### **Improved Machine Shutdown Protection**

Monitors coolant and oil temperatures and prevents them from reaching a critical point of shutdown.

### **Cold Weather Engine Protection**

Protects your machine from working too hard before the engine is properly warmed up.

### **Lower Operating Costs and Reduced Noise**

An auto-idle function on machines equipped with Selectable Joystick Controls will reduce noise levels.





### **Hydraulically Cushioned Cylinders**

Smooth, quick Bobcat lift cylinders softly lower the lift arms back to their original position on the loader frame. This occurs automatically with every lift cycle to reduce noise and increase comfort during operation.


# **POWERFUL LIFT ARMS**

Our durable, patented lift-arm design meets the unique demands of the work you do most often. The vertical lift path provides high lift capacity and great reach at full lift height, keeping the load close to the machine while you raise the loader arms. Because you achieve maximum reach at full lift height, it's easy to clear high-sided truck boxes and hoppers. It's also perfect for placing heavy pallets of block or sod.

### **Single-Plane Design**

Every pin and connecting point on Bobcat lift arms are part of a single-plane design. Side-to-side movement is minimized, resulting in less wear and longer life. It also helps prevent unwanted spillage of material.



The image shows the interior of a skid steer loader cab. The view is from the operator's perspective, looking forward through the windshield. The cab is enclosed in a black metal safety cage with a grid pattern. The dashboard features two digital displays, one on each side, and various control buttons and switches. The steering wheel is black and has the text "FASTEN SEAT BELT" embossed on it. Two control levers are visible on either side of the seat. The floor is a light-colored, textured surface. The text overlay is a white rounded rectangle in the center of the image.

We think a machine's comfort level is as important as its performance and productivity. Comfortable operators are more focused on the job. They're able to get more done. They are more satisfied with their career. All of these things are clear benefits for equipment owners and operators alike. Our M2-Series cab experience ranks among the industry's best.





### **Vibration-Reducing Cab Isolation**

With front-mount rubber bushings that are 32% larger and rear mount bushings that are 160% larger than previous generation loaders, the operator experience is better than ever.

### **Pressurizing Front Door Seal**

A front door seal increases cab pressurization to repel dust and keep clean heated or air-conditioned air inside.



### **Heated Cloth Air-Ride Seats**

Upholstered in comfortable, breathable cloth and equipped with operator-controlled heat for warmth in cold weather, the optional air-ride seat provides the ultimate in comfort. The air suspension adjusts to your weight, helping smooth out the bumps on your jobsite and increasing your comfort.

### **Seat-Mounted Joysticks**

On loaders with Selectable Joystick Control (SJC), the joysticks are mounted to the seat. As your suspension seat moves up and down, the joysticks move with the seat for added comfort while operating.

### **Seat Adjustment**

The adjustable seat features plenty of forward or aft movement to accommodate different-sized operators.

### **Large Entry**

On machines with enclosed cabs, large swing-open doors provide ample room for exit and entry.

### **More Room**

Our stronger, narrower loader arms make a wider cab possible, with up to 20% more interior space than competitors.

### **Heat and Air Conditioning**

Because our AC units are integrated into the machine, there is no bulky add-on unit to obstruct your visibility. Automotive-style vents allow you to point your air where you need it for greater comfort in all weather conditions.

### **Ample Storage**

Storage bins are located throughout the interior. You can store items wherever it's convenient – on your right or on your left.

### **Convenient Engine Speed Control**

The engine speed control is within easy reach on the right-hand corner post of the cab so operators can adjust engine speed quickly and easily.

### **Fingertip Controls**

Fingertip controls make your attachment comfortable to operate, easy to control and simple to adjust.

### **12-Volt Power Accessory**

Your cab is your office. That's why Bobcat installed a 12-volt power accessory for charging your mobile phone and other devices.

### **Easy-Pull, Easy-Secure Side Window**

Simply pull the window knob to slide the side window to five lockable positions. The window stays exactly where you want it to get consistent air flow.

### **Side Lighting Kit**

Mounted above the right and left side windows, these optional low-profile, 800-lumen-rated LED lights make operation more productive at all hours.

### **Radio-Capable**

Order your loader with a stereo to enhance your operation experience. The radio features an auxiliary audio input jack that is ready for a mobile phone or other device.

### **Other Comfort Cab Features**

- High-output halogen lights for low-light operation
- Adjustable foot pedals



# Leading Visibility

Leading all-around visibility is central to the design of the cab on Bobcat loaders. This provides a big advantage when loading a truck or using attachments.



### Top Visibility

A top window gives operators an unbeatable view when raising a load above the cab, such as loading trucks or stacking materials.

### Side Visibility

In the Bobcat cab, you can see the tracks without having to lift your loader arms, increasing your performance in tight areas, such as grading next to a building or backing onto a trailer.



### Rear Visibility

The cab-forward design doesn't affect rear visibility. The large rear window and angle of the back of the loader provide a great view behind the tailgate.

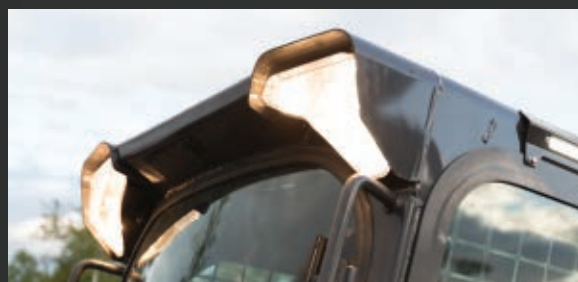
## CAB-FORWARD DESIGN

The cab-forward design moves the operating area closer to the attachment, giving you a better vantage point to see your work.



### Front Lighting

Powerful lighting gives you a great view for night operation.





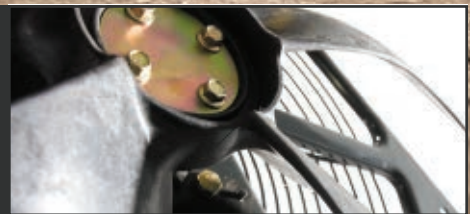
## SMART COOLING

**THE BOBCAT M2-SERIES LOADERS MAKE USE OF DUAL-PATH COOLING.**



### Quieter Operation

The hydraulically powered fan senses engine temperature and only turns as fast as needed, reducing sound levels and providing excellent protection from overheating.



### Protected Cooling Location

The Bobcat radiator and hydraulic oil cooler are well protected between the frame uprights, above the engine. This also leaves the rear of the engine freely accessible for maintenance checks.

### More Efficient Cooling

Designed to provide excellent cooling for M2-Series loaders, the patented dual-path cooling system draws cool, clean air from above, pulls warm air out of the engine compartment and forces it out two side vents, directing hot air away from the operator.

### Optional Reversible Fan

Reduce maintenance and downtime while increasing productivity in dirty, dusty conditions. The reversible fan increases uptime by purging debris from the rear screen. Auto mode reverses airflow automatically, and operator-controlled purge mode gives you the ability to reverse the fan at any time.



# CONTROL THE JOB.

Bobcat provides intuitive, precise and adaptable control options to make every operator as productive as possible. Whether your job requires a fine, precise touch when working close to walls and obstacles or quick, responsive work group action and maneuverability, Bobcat puts you in total control of the task.



### Standard Controls

This tried-and-true system is still a popular style of control today. A lever controls the drive on each side independently, while your feet control the lift arms and bucket.



## SJC adapts performance to the job.

### Drive Response Mode

Drive response mode allows you to choose how the drive responds to joystick movement. Three different settings put you in control.



### Selectable Joystick Control (SJC)

Selectable Joystick Control offers low-effort hand control of all machine work group functions. "ISO" or "H" patterns can be easily activated by a dash-mounted rocker switch inside the cab.





## Remote Control

All loaders equipped with SJC can be operated by a portable remote-control system. This may be beneficial to people operating in certain environments, such as hot or dusty, or for people who would rather work outside the machine.



## Bobcat MaxControl Remote Operation

Use your iPhone® to control your machine remotely. Bobcat MaxControl remote operation is an iOS app that makes operating your machines efficient and more convenient than ever before. Do two-person jobs with one worker, and say goodbye to unnecessary trips in and out of the cab.

**These low-effort joysticks allow the operator to control all machine functions with their hands. This state-of-the-art system is also loaded with several exclusive features that adapt the loader's performance to specific job requirements:**

### Speed Management

"Dial in" your required travel speed in small increments, and match speed to your operation requirements. Get full range of joystick motion at a slower speed for precise control of machine movements while maintaining maximum driveline torque and full hydraulic power.

### Steering Drift Compensation

Steering drift compensation keeps you on a straight path by helping you make minor adjustments to the steering.

### Horsepower Management

Bobcat horsepower management automatically adjusts the loader drive system to maximize pushing and digging power while minimizing your chance of stalling.



# PANORAMIC SERVICEABILITY

Bobcat loaders are designed to provide the fastest, easiest maintenance in the industry. Engine checkpoints are within easy reach – so daily maintenance actually gets done. Unparalleled access to routine and long-term maintenance points makes preventative maintenance simple, reducing your operating costs and adding to your bottom line.

## FULL-ACCESS SERVICEABILITY

Our large, swing-open tailgate provides convenient access to routine maintenance points. There are no radiators to move, lift arms to raise or lift-arm support devices to install.

## TIP-UP CAB

For non-routine service, simply remove two nuts and tip back the cab to access hydraulic and hydrostatic components in minutes.

## HYDRAULIC OIL SIGHT GAUGE

Check your hydraulic oil level quickly and easily as you walk by your machine. Keep an eye on hydraulic oil levels and simplify your daily checks.





# Uptime Protection

## MACHINE SHUTDOWN PROTECTION

Bobcat loaders come standard with automatic shutdown that monitors engine and hydraulic functions. The system alerts the operator and actually shuts the machine down – lessening the chance of damage to the engine or hydraulic components.



## Self-Diagnostics

On-board diagnostics efficiently troubleshoot problems in the field and, in many cases, prevent them from occurring in the first place. Downloadable machine performance history cuts a huge chunk out of the time needed to identify problems and correct them.

## Battery Run-Down Protection

The lighting circuit automatically shuts down to prevent accidental battery discharge.

## Electronic Protection

Bobcat electronics meet or exceed military IP67 requirements for sealing, moisture, shock and vibration. You can work in harsh conditions, or power wash your loader without having to worry if it will start when you are finished. Bobcat electronics feature more watertight, corrosion-resistant connectors than other manufacturers – so you don't slow down from faulty connections.

## Protected Hoses and Quick Couplers

The integrated, pressure-release quick couplers are mounted directly into the front plate of the lift arm – with no exposed hoses to damage. A steel guard extends beyond the coupler, protecting it even further.





# LEGENDARY VERSATILITY

Bobcat loaders have your business expansion built right in. An auger, breaker or one of more than 70 attachments will go a long way to save you time and labor. Whether it's breaking concrete, taking down buildings or drilling tree holes, Bobcat attachments help you take on new jobs and get more use from your machine. No other manufacturer builds more of its own attachments than Bobcat, so they're vertically integrated with your Bobcat loader's electronics, hydraulics and geometry— with optimal visibility and ease of entry and exit in mind.



## Bob-Dock System

The Bob-Dock attachment mounting system brings hands-free hydraulic connections to your Power Bob-Tach® attachment mounting system. Simply line up with the attachment's Bob-Dock adapter plate, then press the Power Bob-Tach switch. Available on select models.



## Quick Couplers

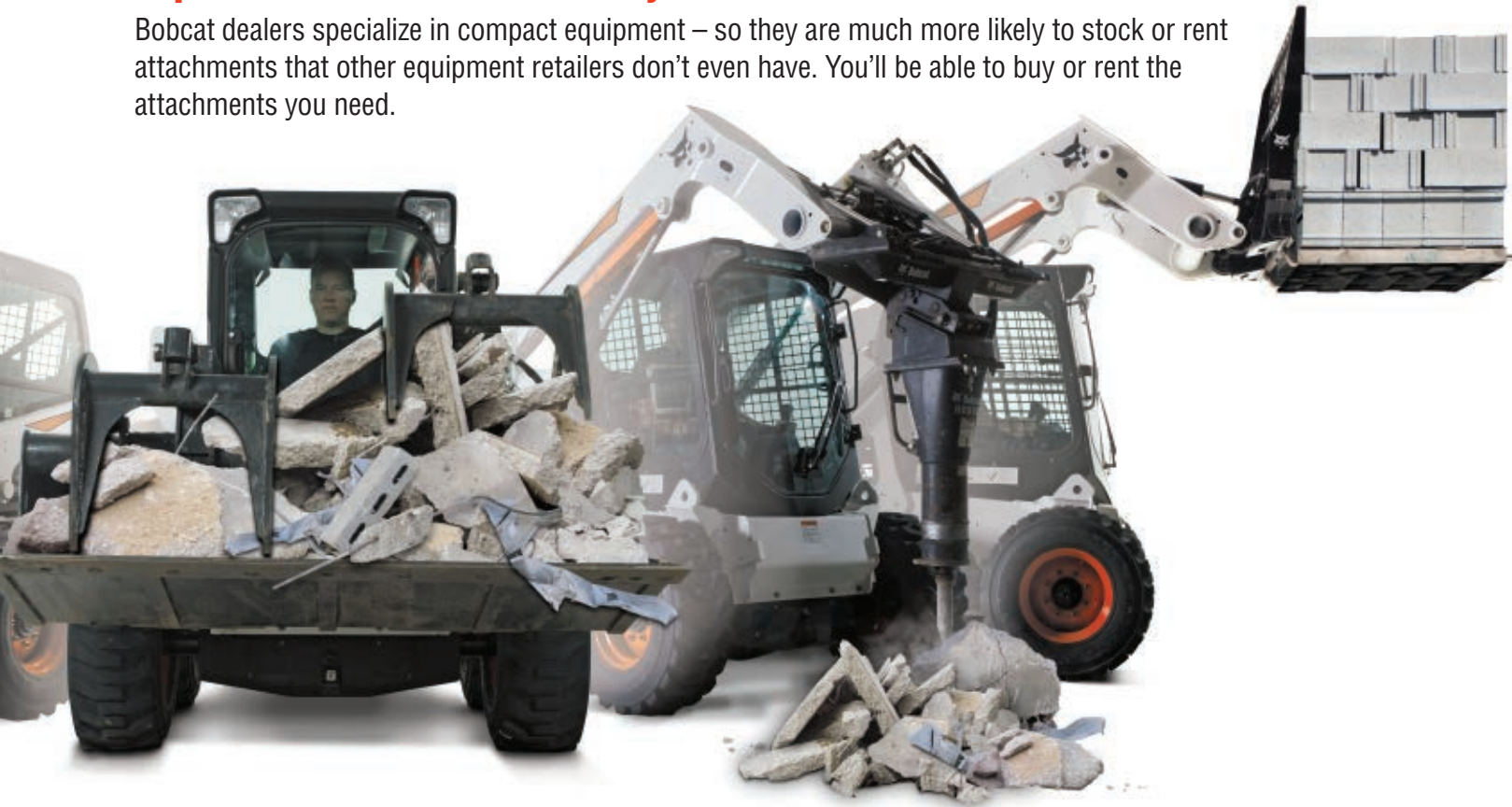
Trapped line pressure can make attachment changes anything but quick. So Bobcat loaders come with quick couplers to release trapped pressure. By pushing the coupler inward, hydraulic oil is released through a return line back into the machine. The result is a clean, quick attachment change every time.





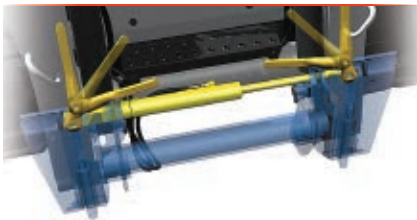
## Superior Attachment Availability

Bobcat dealers specialize in compact equipment – so they are much more likely to stock or rent attachments that other equipment retailers don't even have. You'll be able to buy or rent the attachments you need.



### Bob-Tach System

Change attachments in less than a minute with the Bob-Tach mounting system. Replace a bucket with a pallet fork, landscape rake, auger, grapple and more, while keeping a tight attachment fit every time.



#### Power Bob-Tach System

With the Power Bob-Tach system, you can change non-hydraulic attachments without leaving the comfort of your cab. Just line up the attachment and press the switch.



#### High-Flow Hydraulics

Optional high-flow hydraulics provide a big power boost for better production with attachments. Certain attachments, such as the flail cutter, trencher, planer and stump grinder, get maximum performance from high-flow hydraulics.



#### Attachment Control Kit

Several attachments require control of more than one function. Our small, seven-pin attachment harness activates power and fingertip control functions while eliminating the need for mechanical relays used on other loaders. It's fully integrated with your Bobcat loader for a clean look and protected routing.



## DELUXE INSTRUMENTATION

The deluxe instrument panel offers you even more functionality. The 5-inch, full-color LCD screen enables monitoring of and interaction with your machine. The system can even provide information about machine performance in English, Spanish and five other languages.



**Activity Monitor** Check machine usage by operator with the job clock feature.



**Functional Lockouts** Protect your investment from misuse or accidental use by locking out certain functions such as high-flow hydraulics and 2-Speed travel.

### Password-Protected Keyless Start

Eliminate downtime due to lost keys. Remove the risk of spare keys in the pockets of current or former employees. Reduce the chance of theft or unauthorized use. You might even reduce your insurance premiums.

### Attachment Operation

Deluxe instrumentation features a viewable job clock for certain attachments and the ability to make adjustments to laser-guided attachments without stepping out of the cab. You can even monitor certain attachment functions on-screen.

### Diagnostics

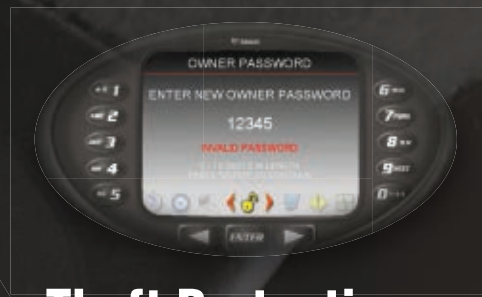
The easy-to-read, backlit display panel monitors 14 major loader functions and provides troubleshooting suggestions to help solve a potential problem, which helps maximize your uptime.

### Other Deluxe Instrumentation Features

Digital time clock, user job clock, statistics for overall job and individual operators, resettable hour meter, attachment controls, help menu, and multiple password settings give you added convenience and more control over your machine.

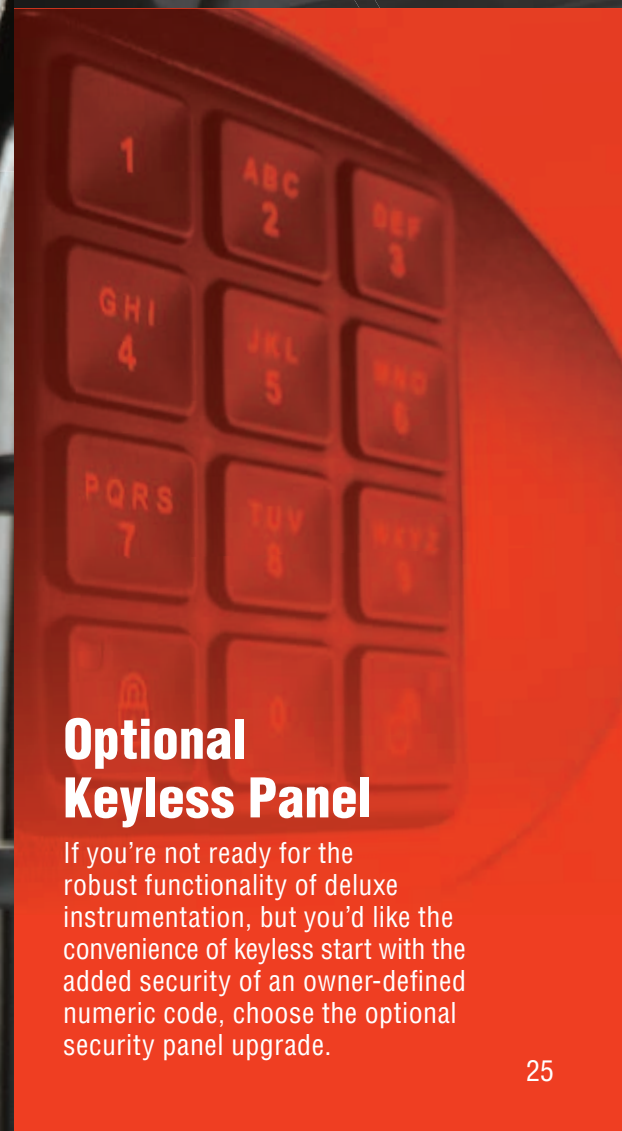
M2-Series deluxe instrument panel is pictured here. See your dealer for details.





## Theft Protection

Compact loaders are one of the most stolen pieces of compact equipment in the world. Reduce the risk of loss due to theft or unauthorized use with the optional password-protected Bobcat deluxe instrument panel and up to eight custom keyless start codes. It may even qualify your business for reduced insurance premiums.



## Optional Keyless Panel

If you're not ready for the robust functionality of deluxe instrumentation, but you'd like the convenience of keyless start with the added security of an owner-defined numeric code, choose the optional security panel upgrade.



# INSTRUMENTATION



## Deluxe Instrumentation Hour Clock

With the deluxe instrument panel, you can monitor the number of hours on each attachment.



## Sonic Tracer/Slope Sensor

Use the deluxe instrument panel to set, adjust and monitor cross-slope grading progress.



## Laser Positioning

For laser-controlled attachments, deluxe instrumentation provides real-time, in-cab attachment position monitoring and adjustment.



## Tree Spade Control

With deluxe instrumentation, you can monitor active blades and gates, change auto-dig and easy-dig settings, and monitor the number of trees dug in a day.



## PRECISION GRADING

Compact loaders are commonly used for grading, and Bobcat does grading better than any other brand. Bobcat manufactures the most productive box blade and grader attachments in the industry, but we don't stop there. Bobcat loaders give you access to exclusive technology that increases your grading efficiency while saving material and labor.

### Accuracy Within 1/4-Inch

Sonic and laser-guided grading systems offer you unbeatable precision that amplifies your profit potential by cutting thousands in material and labor from the job. Bobcat precision grading equipment often pays for itself with just one or two big jobs.

#### 3D Grading System

Expand your capabilities and increase your efficiency with the industry's first 3D-ready system for compact equipment. Using the plug-and-play system, you'll save time, fuel and money with millimeter accuracy. Using GPS or UTS, the system has the ability to complete complex design projects including parking lots, sports fields and road work.

#### Laser-Guided Grading

Your Bobcat loader and the attachment make adjustments automatically, saving you hours of time and thousands in labor and material. Depending on the attachment and transmitter, the laser-guided grading system can grade a flat-plane, single-slope or dual-slope surface.

#### Sonic Tracer/Slope Sensor Control

The sonic tracer/slope sensor kit enables operators to create an accurate cross-slope or precisely grade when laser receivers and transmitters are limited by jobsite obstacles or the grade needed does not follow a plane.

#### Enhanced Grading With the Deluxe Instrument Panel

Deluxe instrumentation enables operators to set the parameters of the grading system and get real-time information during operation – such as distance to target for both elevation and slope – without the need for a separate control box inside the cab.



# SPECIFICATIONS



Model	S740	S770	S850
Loader Series	M2-Series	M2-Series	M2-Series
Rated Operating Capacity (ROC) (35% tipping load)	–	–	–
ROC (50% of tipping load)	3100 lb. (1406 kg)	3350 lb. (1520 kg)	3950 lb. (1792 kg)
ROC With (optional 200 lb./90 kg) Counterweight	3250 lb. (1474 kg)	3500 lb. (1588 kg)	4100 lb. (1860 kg)
	Counterweight kits are available to		
Tipping Load	6200 lb. (2812 kg)	6700 lb. (3039 kg)	7900 lb. (3583 kg)
Height to Bucket Hinge Pin	131.4 in. (3338 mm)	131.4 in. (3338 mm)	144.0 in. (3658 mm)
Lift Arm Path	Vertical	Vertical	Vertical
<b>Size and Speed</b>			
Operating Weight	8794 lb. (3989 kg)	9314 lb. (4225 kg)	10,237 lb. (4643 kg)
Width With Bucket	74.0 in. (1880 mm)	74.0 in. (1880 mm)	80.0 in. (2032 mm)
Height With Cab	81.3 in. (2065 mm)	81.3 in. (2065 mm)	83.4 in. (2118 mm)
Travel Speed – Low Range	7.1 mph (11.4 km/hr.)	7.1 mph (11.4 km/hr.)	7.1 mph (11.4 km/hr.)
Travel Speed – High Range (optional 2-Speed travel)	12.3 mph (19.8 km/hr.)	12.3 mph (19.8 km/hr.)	12.3 mph (19.8 km/hr.)
<b>Engine</b>			
Horsepower	Tier 4 74.0 hp (55.2 kW)	Tier 4 92.0 hp (68.6 kW)	Tier 4 100.0 hp (74.6 kW)
Type	Turbo Diesel	Turbo Diesel	Turbo Diesel
Fuel Tank Capacity	23.9 gal. (90.5 L)	23.9 gal. (90.5 L)	29.5 gal. (111.6 L)
Horsepower Management	Included with SJC Option	Included with SJC Option	Std
<b>Tires</b>			
Bobcat Heavy Duty	Std	Std	Std
<b>Tracks/Undercarriage</b>			
Track Width - Standard	–	–	–
Ground Pressure (with standard tracks)	–	–	–
Ground Pressure (with optional tracks)	–	–	–
Length of Track on Ground	–	–	–
Undercarriage	–	–	–
Grease Cylinder Track Tensioning	–	–	–
<b>Control Options</b>			
Bobcat Standard (foot pedals/steering levers)	Std	Std	–
Standard Controls With Power Assist (SCPA)	–	–	Std
Selectable Joystick Control (SJC)	Opt	Opt	Std
Radio Remote Control (SJC required)	Opt	Opt	Opt
<b>Machine Features</b>			
2-Speed Travel	Opt	Opt	Std
Automatic Ride Control	Opt	Opt	Opt
Back-Up Alarm and Horn	Std	Std	Std
Bobcat Interlock Control System (BICS)	Std	Std	Std
Cab With Heat	Opt	Opt	–
Cab With Heat and Air Conditioning	Opt	Opt	Opt
Front and Rear Work Lights	Std	Std	Std
Heated Cloth Air-Ride Seat	Opt	Opt	Opt
Hydraulic Bucket Positioning	Opt	Opt	Opt
Mechanical Suspension Seat	Std	Std	Std
Radio	Opt	Opt	Opt
Reversing Fan	Opt	Opt	Opt
ROPS/FOPS Approved Cab Structure	Std	Std	Std
Side Lighting Kit	Opt	Opt	Opt
Standard Display (includes keyless start)	Opt	Opt	Opt
Sound Reduction Package	Opt	Opt	Opt
<b>Features for Attachments</b>			
Attachment Control Kit	Opt	Opt	Opt
Bob-Dock System	Opt	Opt	–
Bob-Tach Mounting System	Std	Std	Std
Power Bob-Tach System	Opt	Opt	Opt
Fingertip Auxiliary Hydraulics Control	Std	Std	Std
Hydraulic System Pressure	3500 psi (24.1 MPa)	3500 psi (24.1 MPa)	3500 psi (24.1 MPa)
Hydraulic Standard Flow	23.0 gpm (87.1 L/min.)	23.0 gpm (87.1 L/min.)	23.0 gpm (87.1 L/min.)
Hydraulic High Flow (optional)	30.5 gpm (115.5 L/min.)	36.6 gpm (138.5 L/min.)	36.6 gpm (138.5 L/min.)
Pressure Release Hydraulic Quick Couplers	Std	Std	Std
Speed Management	Included with SJC Option	Included with SJC Option	Std









# One Tough

## B O B C A T T I M E L I N E







One-Millionth Loader

2014



M2-Series Loaders

2016



R-Series Excavators

2017



Compact Tractors

2019



Large Excavators

2019



R-Series Loaders

2020



R2-Series Excavators

2020



Small Articulated Loaders

2020



Zero-Turn Mowers

2020



Compact Wheel Loaders

2021





# YOU ARE ONE TOUGH ANIMAL.®

Everything we put into Bobcat equipment is designed to make more of whatever you bring to the job. Whether it's strength, versatility, speed or agility, it's built around you.

Certain specification(s) are based on engineering calculations and are not actual measurements. Specification(s) are provided for comparison purposes only and are subject to change without notice. Specification(s) for your individual Bobcat equipment will vary based on normal variations in design, manufacturing, operating conditions, and other factors.



**Bobcat is a Doosan company.** Doosan is a global leader in construction equipment, power and water solutions, engines, and engineering, proudly serving customers and communities for more than a century. Bobcat®, the Bobcat logo and the colors of the Bobcat machine are registered trademarks of Bobcat Company in the United States and various other countries. ©2022 Bobcat Company. All rights reserved.



Printed on 10% recycled paper

B-2182 (01/22)  
EP-7M-0122-81538-F

**Bobcat Company**  
250 East Beaton Drive • West Fargo, ND 58078

[Bobcat.com](http://Bobcat.com)



**Bobcat®**

***One Tough Animal.***